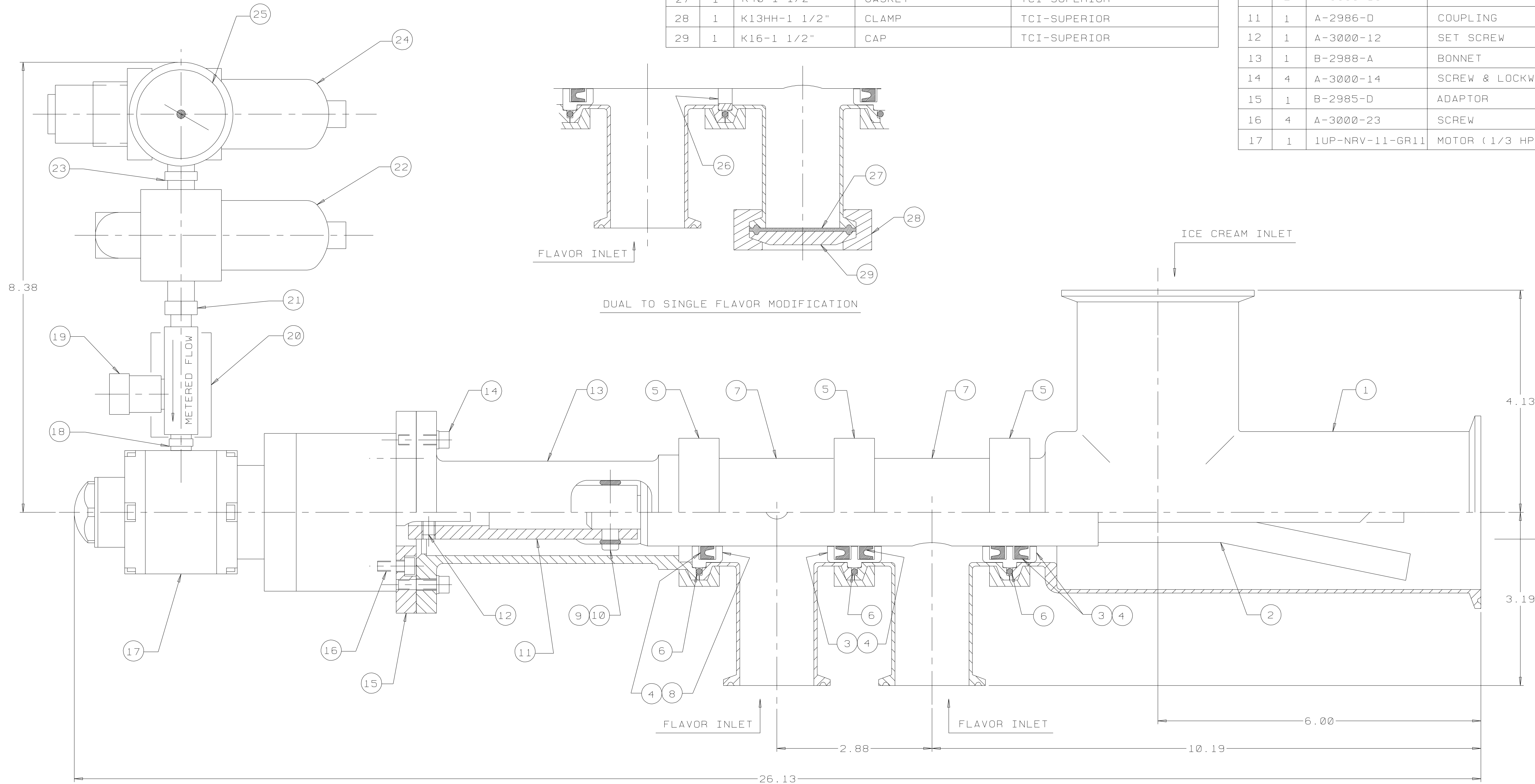


V-638C-0

| ITEM | REQD | PART NO.     | DESCRIPTION         | REMARKS              |
|------|------|--------------|---------------------|----------------------|
| 18   | 1    | 216P-2       | HEX NIPPLE          | PARKER               |
| 19   | 1    | F200B-11KT   | FLOW CONTROL VALVE  | PARKER               |
| 20   | 1    | AF350        | MUFFLER             | GAST MANUF. CORP.    |
| 21   | 1    | 216P-4-2     | HEX NIPPLE-REDUCING | PARKER               |
| 22   | 1    | 14L11GA      | LUBRICATOR          | PARKER               |
| 23   | 1    | 216P-4       | HEX NIPPLE          | PARKER               |
| 24   | 1    | 04E11B13FB   | FILTER/REGULATOR    | PARKER               |
| 25   | 1    | 111.10.2"    | GUAGE               | WIKA (0-160 PSI/KPA) |
| 26   | 1    | B-2982-D     | PILOT BUSHING       |                      |
| 27   | 1    | K40-1 1/2"   | GASKET              | TCI-SUPERIOR         |
| 28   | 1    | K13HH-1 1/2" | CLAMP               | TCI-SUPERIOR         |
| 29   | 1    | K16-1 1/2"   | CAP                 | TCI-SUPERIOR         |

| ITEM | REQD | PART NO.        | DESCRIPTION        | REMARKS                    |
|------|------|-----------------|--------------------|----------------------------|
| 1    | 1    | B-2996-A        | BODY               | 3" WITH CLAMP ENDS         |
| 2    | 1    | C-2984-A        | FLAVOR TUBE        | CUSTOMER TO SPECIFY STYLE  |
| 3    | 2    | B-2994-D        | LOWER BUSHING      |                            |
| 4    | 5    | A-3000-4        | SEAL               |                            |
| 5    | 3    | K13HH-2"        | CLAMP              | TCI-SUPERIOR               |
| 6    | 3    | A-3000-6        | "O" RING           | -226                       |
| 7    | 2    | B-2992-A        | FLAVOR TEE         | 2 x 1 1/2 WITH CLAMP END   |
| 8    | 1    | B-2989-D        | UPPER BUSHING      |                            |
| 9    | 1    | A-3000-9        | DRIVE PIN          |                            |
| 10   | 2    | A-3000-10       | "O" RING           | -10                        |
| 11   | 1    | A-2986-D        | COUPLING           |                            |
| 12   | 1    | A-3000-12       | SET SCREW          | 1/4-20 x 1/4" LG. S.S.     |
| 13   | 1    | B-2988-A        | BONNET             |                            |
| 14   | 4    | A-3000-14       | SCREW & LOCKWASHER | 10-32 x 3/4" LG. SHCS S.S. |
| 15   | 1    | B-2985-D        | ADAPTOR            |                            |
| 16   | 4    | A-3000-23       | SCREW              | 10-32 x 1/2" LG. SHCS S.S. |
| 17   | 1    | 1UP-NRV-11-GR11 | MOTOR (1/3 HP)     | GAST MANUF. CORP.          |



**NOTE**  
DIMENSIONS ARE APPROXIMATE AND  
SUBJECT TO CHANGE WITHOUT NOTICE

- NOTES:**
1. VARIEGATOR TO BE DISASSEMBLED AND HAND CLEANED DO NOT CLEAN IN PLACE
  2. ALL PRODUCT CONTACT MATERIALS TO BE STAINLESS STEEL TYPE 304, BUNA OR DELRIN
  3. MAXIMUM AIR REQUIREMENTS: 100 PSIG, 20 CFM

TOLERANCES UNLESS OTHERWISE SPECIFIED  
0.0000 ±.015  
0.0000 ±.025  
0.0000 ±.0005  
ANGULAR ±1 DEG

THE DRAWING AND INFORMATION CONTAINED ON THIS DOCUMENT IS CONFIDENTIAL AND THE SOLE PROPERTY OF HOLLAND MFG., INC. AND MAY NOT BE REPRODUCED, USED, OR DISCLOSED WITHOUT PRIOR WRITTEN PERMISSION OF AN AUTHORIZED AGENT OF HOLLAND MFG., INC.

**HOLLAND MANUFACTURING, INC.**  
6851-51 ST. KENOSHA, WIS

SCALE: FULL BY: SW  
DATE: 1-25-88

VERSACAD DWG  
VOLUME:  
FILE #: D3839A

3" TWO FLAVOR AIR DRIVE  
VARIABLE SPEED VARIATOR  
MODEL AT2FK-3"  
THREADED BEVEL SEAT PORTS D-3839-A